



FEL990 Series

ELECTRIC MORTICE LOCK

The FEL990 Series electric mortice lock is a true multi-functional locking device. It has been developed for simplicity - simplicity for the stockist, the installer and the end-user. There are two options available - monitored and non monitored.

The Lock can be operated by push buttons, intercom systems, key switches, and can be integrated with electronic access control systems for use with security devices such as keypads or card readers.

The monitored option is also available as a kit, which includes a fire rated Power Transfer Device. The Power Transfer Device provides a means of transferring electrical power from a door frame to the edge of a swinging door. The units can be used on doors that open from 90° to 120° and are completely concealed when the door is in the closed position.



Warranties	
Mechanical	10 years
Electronic	1 years



Features

- Single-sided locking (vestibule) / double-sided locking (combination)
- Power To Lock (fail safe) / Power To Open) (fail safe)
- 10 year warranty (mechanical)
- 1 year warranty (electronic)
- Left hand / right hand operation
- Multi-voltage - 12-24VDC / 350mA momentary, 100mA operating including LED furniture if applicable
- Up to 4-hour fire rated in accordance with AS1905.1:2015 (contact Allegion for more details)
- Conforms to S3* (Security) and D3 (Durability) Australian Lock Standard (AS4145.2:1993)
- Conforms to S4* (Security) monitored version only
- Fire rated 300mm Lead cover Power Transfer Device included when ordered as a kit: FEL990M-PTD



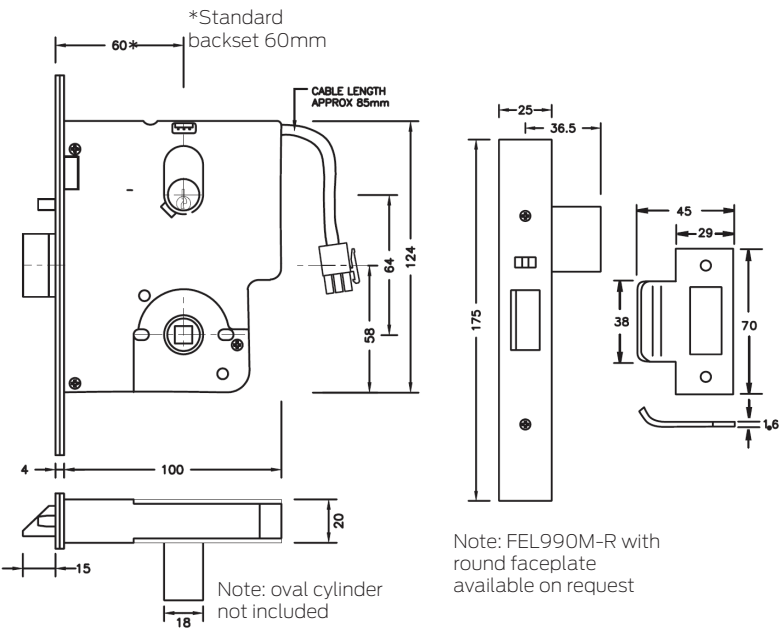
FEL990-PTD pictured above.



Technical specifications

Part No.	FEL990M	FEL990
Certification/ Approvals	Conforms when used with equivalent S3 keying system (S4 keying system for FEL990M only) CE/	
Function	Vestibule and combination lock (field changable of either/or both sides locked) Lock handed (left hand/right hand field selectable)	
Lock Operation	Fail safe / fail secure adjustable on site - one product for both applications	
Voltage/Current	Multi-voltage - 12-30VDC / 350mA momentary, 100mA operating including LED furniture if applicable Reverse polarity protected Door status reed switch max. rating 100mA operating	
Monitoring (990 version only)	Door position monitoring by reed switch Lock status monitoring by a combination of; Locking bar (hub/handle/s locked), Deadlatching bolt (suppressed, latchbolt (out) locking parameters Dual key override monitoring (KOM) Request to exit (REX) via hub/ handle (s) LED indication	
Environmental	-20 to +60 degrees C	
Door Thickness	32 - 50mm (extended spindles available for up to 65mm)	
Backset	60mm optional: 70mm, 89mm and 127mm	
Cabling	3m cable with 12 pin plug supplied	
Finish	Satin stainless steel (other finishes on request)	

Mounting details



Testing and Compliance



Fire rated:
Tested on fire door assemblies in accordance with Australian standards.
Refer to fire door manufacturer for specific approval details.



Contact Allegion for more details